

Annex 37

INTERNATIONAL CORRESPONDENCE CHESS FEDERATION

<http://www.iccf.com> and <http://www.iccf-webchess.com>



The International Correspondence Chess Federation, is an independent and democratic organisation founded in 1951, which is affiliated as an international organisation with FIDE. This means that FIDE recognises World Correspondence Chess Champions and International Correspondence Chess Titles, which are awarded each year by ICCF.



Correspondence Chess is defined as a game of chess in which the players do not sit opposite each other at a chess board to make their moves. Moves are communicated by any form of long-distance transmission, with playing time counted in days e.g. 10 moves in each 50 days.

ICCF supports and promotes international co-operation between chess players, enthusiasts and FIDE, thereby aiming to enhance contact and friendly harmony amongst the peoples of the world. The motto of ICCF is *Amici Sumus*: (we are friends).

For many years, correspondence chess was played only by post, but nowadays, more than 90% of games are played via the internet, especially through the ICCF webserver system.

All ICCF tournaments are international tournaments. In ICCF, chess players of all standards can participate internationally, which is rather unique for an international sports organisation.

Correspondence Chess players no longer depend on having good postal connections, but can now also live in any part of the World, providing they have access through the internet.

Correspondence chess is especially attractive to players who like to perfect the art of analysis. As reflection time is measured in days, players can try to find the best moves instead of good ones and the quality of correspondence chess, played at higher levels, cannot be questioned.

Nowadays it is very often played by strong chess players who, at a certain moments in their life-time, have to give priority to professional careers and domestic responsibilities, rather than using much of their time playing chess. They like to play correspondence chess in their own time and from the comfort of their homes. With webserver play, there is no travel, no postage cost, no clerical effort, no loss of time in transmission and completely accurate time recording.

ICCF Tournaments offer a wide variety of events to suit all standards of chess players from Grandmasters to chess enthusiasts:

- WORLD CHAMPIONSHIPS CYCLES,
 - OLYMPIADS, • WORLD CUPS,
 - ZONAL and CONTINENTAL CHAMPIONSHIPS,
 - CHAMPIONS LEAGUE,
 - JUNIOR CUPS • VETERANS CUPS,
 - THEMATICS, • PROMOTION TOURNAMENTS,
 - INVITATIONAL TOURNAMENTS,
 - SPECIAL EVENTS and also
 - FRIENDLY MATCHES
- are all available.

Players can enter ICCF tournaments via their national correspondence chess organisation or through ICCF's Direct Entry facilities via the main ICCF website

<http://www.iccf.com>

even when they are not a member of any national organisation.

Correspondence Chess Ratings include results from almost all international tournaments (and various national tournaments). Rating lists will soon be available quarterly (currently half-yearly). The ICCF Rating System is used to set tournament categories for title purposes. The Correspondence Chess titles awarded by ICCF are:

- INTERNATIONAL GRANDMASTER,
- SENIOR INTERNATIONAL MASTER and
- INTERNATIONAL MASTER, and there are also
- LADIES and • ARBITER titles.

The ICCF Webserver System's Games Screen enables players to enter their moves directly on a chessboard and to exchange messages with their opponents.

In 2001, ICCF published a 50th Jubilee book, **"ICCF Gold"**

A free copy is available to FIDE delegates from ICCF Honorary President and ICCF Liaison Officer to FIDE: Alan P. Borwell (who may also be contacted for more information about ICCF).

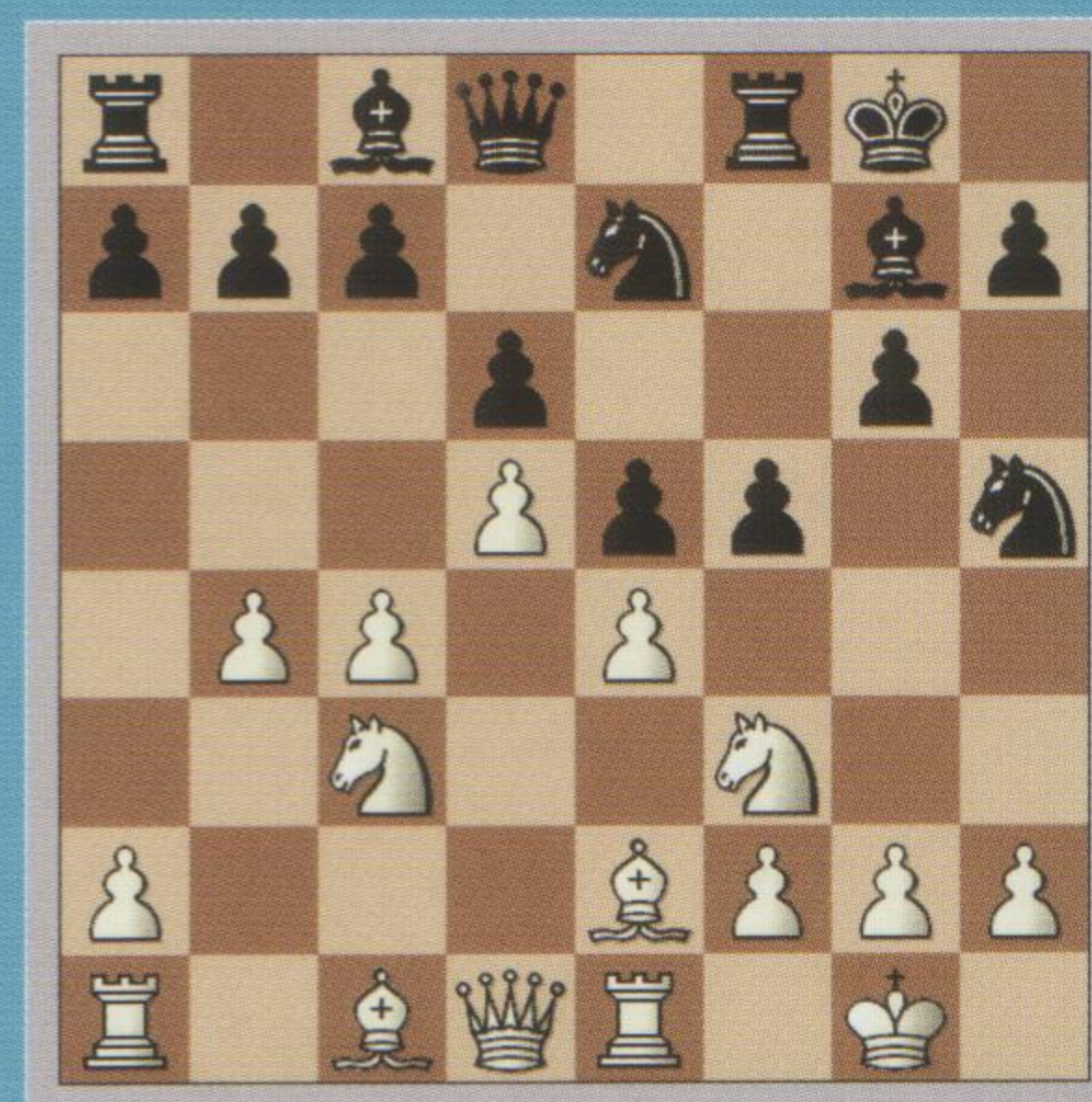
Two diagrams from ICCF competitions being played currently:

- Roman Chytilek CZE
 - Guillermo Toro Solis de Ovando CHI
- SIMON WEBB MEMORIAL



and a thematic fight in the King's Indian between two former Correspondence Chess World Champions

- Gert Jan Timmerman NED
- Mikhail Umansky RUS



These games and other live games can be followed on:
<http://www.iccf-webchess.com/LiveGames.aspx>

Members of ICCF are National Correspondence Chess Organisations, which have principal authority over correspondence chess activities in their own country (where the country has membership of FIDE) with only one organisation per country allowed. ICCF currently has 67 member countries, but would welcome more FIDE countries as members.

National member organisations of ICCF are normally independent bodies, but they can also be a specialist section, within the national over-the-board chess organisation for that country.

Each ICCF member organisation can nominate players for the World CC Championships Cycle, enter Olympiad teams, organise international invitational title tournaments and play some/all of their national tournaments on the ICCF webserver. They also can vote in annual ICCF Congresses, where they can be represented by their national delegate to ICCF, or by proxy.

Currently, ICCF member countries are organised into four zones: Europe, Latin-America, North America/Pacific and Africa/Asia.

Countries currently having membership of ICCF are:

Zone 1 – Europe (36)

Austria, Belarus,
 Belgium, Bulgaria,
 Croatia, Czech Republic,
 Denmark, England,
 Estonia, Finland,
 France, Germany,
 Greece, Hungary,
 Iceland, Ireland,
 Israel, Italy, Latvia,
 Lithuania, Luxembourg,
 Malta, Netherlands,
 Norway, Poland,

Portugal, Romania,
 Russia, Scotland,
 Slovakia, Slovenia,
 Spain, Sweden,
 Switzerland, Turkey,
 Ukraine.

Zone 2 – Latin America (12)

Argentina, Brazil,
 Chile, Colombia,
 Cuba, Ecuador,
 Guatemala, Nicaragua,
 Panama, Peru,
 Uruguay, Venezuela.

Zone 3 –

North America / Pacific (9)

Australia, Canada,
 Hong Kong, Indonesia,
 Japan, Mexico,
 New Zealand,
 Singapore, USA.

Zone 4 – Africa / Asia (10)

Algeria, Burkina Faso,
 Ghana, India,
 Côte d'Ivoire,
 Kazakhstan, Kenya,
 Qatar, South Africa,
 Togo, Tunisia,
 Turkmenistan.

Applications for ICCF membership should be forwarded to
 ICCF President, **Med Samraoui**, (msamraoui@iccf.com)
 or ICCF General Secretary **Pedro Hegoburu**, (pfhegoburu@iccf.com)